

PORTING CONFIGURATION 26-1600 SERIES REGULATOR

SPRING LOADED, HAND OPERATED, PRESSURE REDUCING,
NON-RELIEVING VALVE.

MODIFICATION FEATURES:

LOCKING WRENCH ADJ.
DIAPHRAGM: VITON
.207 ORIFICE
BALANCED STEM
DOME LOADED
O-RINGS: VITON
SEAT: TEFLON

GENERAL SPECIFICATIONS:

INLET PRESSURE: 3000 PSI MAX.
MAX. REF. PRESSURE: 1000 PSI
OUTLET PRESSURE: REF PRESS PLUS BIAS
DESIGN PROOF PRESSURE: 150% OF RATED PRESSURE
PRESSURE RATING: PER CRITERIA OF ANSI/ASME B31.3
OPERATING TEMPERATURE: -15°F TO +165°F
LEAKAGE: BUBBLE TIGHT
FLOW CAPACITY (Cv.): .24
WEIGHT: APPROXIMATELY 3 LBS.
MAX. OPERATING TORQUE: 25 IN.-LBS.

MATERIALS CONTACTING LINE MEDIA:

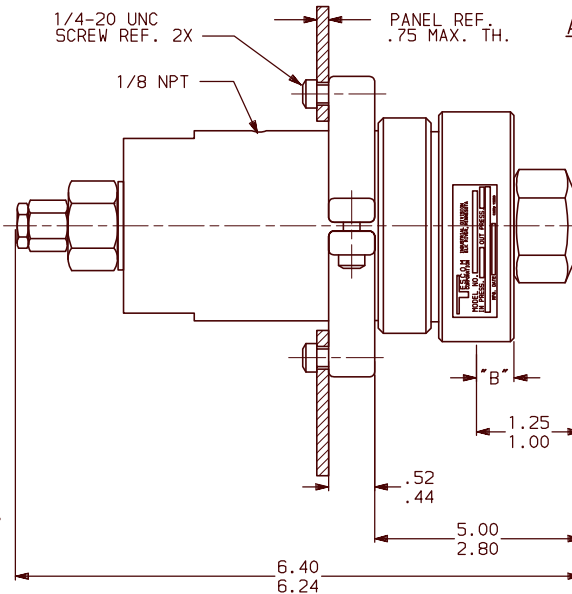
SEAT, MAIN VALVE: TEFLON
SEAT, VENT: _____
O-RING: VITON-A
DIAPHRAGM: VITON-A
FILTER: 300 SERIES SST
BODY: SEE TABLE I
REMAINING PARTS: 300 SERIES SST

ASSEMBLY INFORMATION:

FOR ASSEMBLY OF THIS UNIT USE SPEC: A41162-43

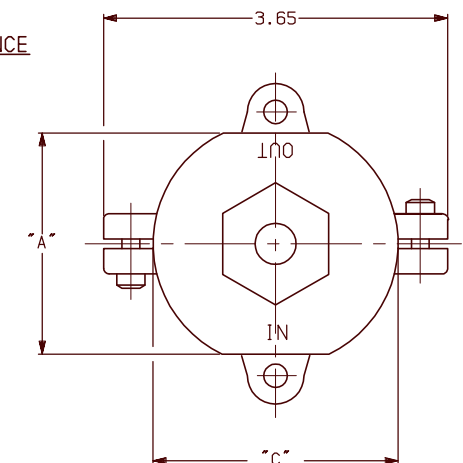
NOTES:

1. PRESSURE AT WHICH REGULATOR IS USED MUST BE COMPATIBLE WITH THE PRESSURE RATING OF THE REGULATOR AND PORT SIZE/TYPE PROVIDED.



26-16XX-XX-441

ALL DIMENSIONS REFERENCE



INLET & OUTLET PORT	"A"	"B"	"C"
1/4	2.42	.42	Ø2.60
3/8	2.42	.42	Ø2.60
1/2	3.16	.53	Ø3.33

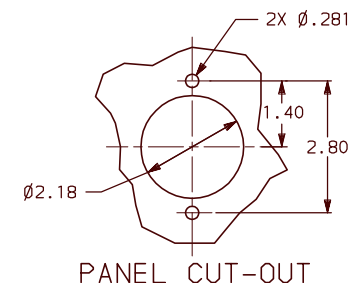
SERIES NUMBER
MODIFICATION NUMBER
26-1661-24-441

TABLE I	DASH NO.	BODY MATERIAL
	1	BRASS
	6	316 SST

TABLE II	DASH NO.	BIAS PRESSURE RANGE
	0	0-50 PSI
	1	0-150 PSI
	2	0-250 PSI
	3	0-500 PSI

TABLE IV	DASH NO./LTR	INLET & OUTLET PORT SIZE
	4	1/4
	6	3/8
	8	1/2 SST BODY ONLY

TABLE III	DASH NO.	IN & OUT PORT TYPE
	1	SAE
	2	NPT
	3	MS33649



PANEL CUT-OUT

TESCOM CORPORATION INDUSTRIAL CONTROLS DIVISION ELIZABETH, NJ USA INFORMATION CONTAINED ON THIS DOCUMENT IS THE PROPERTY OF TESCOM CORPORATION. NO RIGHTS ARE CONVEYED NOR IS PERMISSION TO DISCLOSE TO OTHERS GIVEN. UNLESS OTHERWISE SPECIFIED: .0 ± .020 ANGLES: ±° .00 ± .010 .000 ± .005 SURFACE ROUGHNESS: 100/ CORNER & FILLET RADI: .005-.020 THREADS: CLASS 2 REMOVE ALL BURRS MFG. SPEC. 00301 DRAWING MADE IN THIRD ANGLE PROJECTION (DO NOT SCALE DRAWING)			
REV.	DATE	ECO NO.	BY: APPR
R	2-20-04	1100-04	JLS DP
P	3-27-00	787-00	JLS DP
REVISIONS			
REFERENCE DRAWING(S)			

MATERIAL: _____			
FINISH: _____			
DRAWN BY: JLS 3-27-00		CHECKED BY: DP 3-30-00	
APPROVED BY: DP 3-30-00			
NAME: _____			
INSTALLATION INFO.			
SCALE: 1:1	SIZE: C	NUMBER: 26-16XX-XX-441	
CODE NO. 13669	SHT. 1	OF 1	