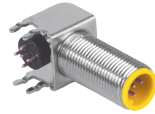


4, 5, 6 and 8-Pin Receptacles, Rear Mount with PCB Pins

- Male Receptacles
- NEMA 1, 3, 4, 6P
- IEC IP68 Protection
- 250 V, 4 A (4 & 5 pole)
- 60 VAC/75 VDC, 2 A (6 & 8 pole)



Housing Style	Male Part Number	Features	Pinout
	WFS 4.4-PCB	105°C, mates with 4-pin cordsets, nickel plated brass housing material	Male
	WFS 4.5-PCB	105°C, mates with 5-pin cordsets, nickel plated brass housing material	Male
	WFS 6-PCB	105°C, mates with 6-pin cordsets, nickel plated brass housing material	Male
	WFS 8-PCB	105°C, mates with 8-pin cordsets, nickel plated brass housing material	Male

WFS PCB Layout
