

## PORTING CONFIGURATION

## REGULATOR

DOME LOADED BACK PRESSURE REGULATOR

## MODIFICATION FEATURES:

## GENERAL SPECIFICATIONS:

INLET PRESSURE: 5000 PSI MAX.  
 REFERENCE PRESSURE: 5000 PSI MAX.  
 DESIGN PROOF PRESSURE: 150% OF RATED PRESSURE  
 DESIGN BURST PRESSURE: PER CRITERIA OF ANSI/ASME B31.3  
 OPERATING TEMPERATURE: -65°F TO +165°F  
 LEAKAGE: NONE  
 FLOW CAPACITY (Cv): .06

WEIGHT: APPROXIMATELY 2.25 LBS  
 MAX. OPERATING TORQUE: 40 IN.-LBS.

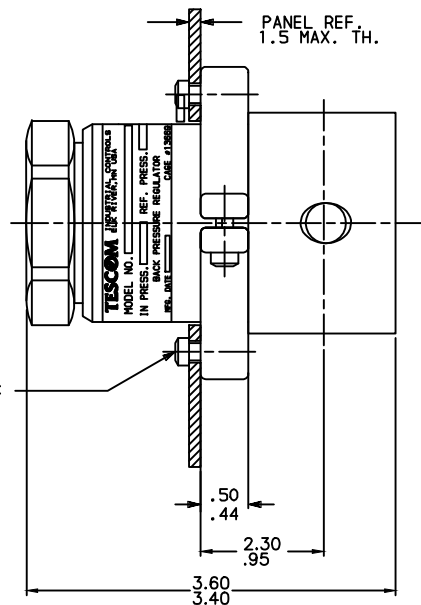
## MATERIALS CONTACTING LINE MEDIA:

SEAT, MAIN VALVE: TEFLON (PTFE)

SEAL: CTFE  
 O-RING: BUNA-N  
 BACK-UP RING:  
 BODY: SEE TABLE III  
 REMAINING PARTS: 300 SERIES SST

## ASSEMBLY INFORMATION:

FOR ASSEMBLY OF THIS UNIT SEE SHEET 2 OF 2

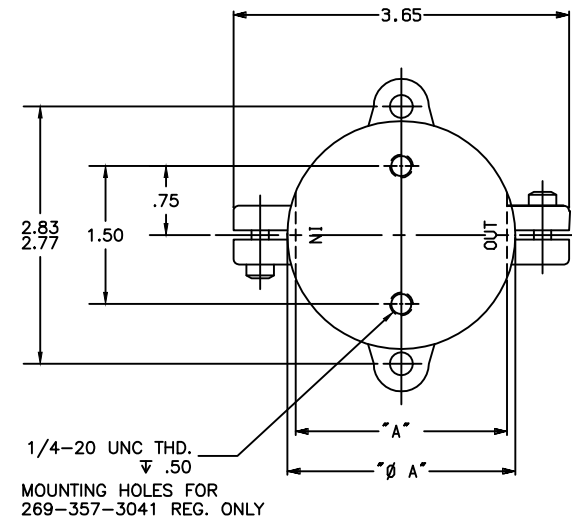
2X 1/4-20 UNC  
SCREW REF.BASIC MODEL NUMBER  
DASH NUMBER

269-357-2046

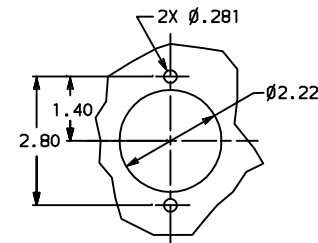
TABLE III	DASH NO.	BODY & DOME MATERIAL
	1	BRASS
	6	316 SST

TABLE II	DASH NO.	INLET & OUTLET PORT SIZE
	04	1/4

TABLE I	DASH NO.	IN & OUT PORT TYPE
	2	NPT
	3	MS33649



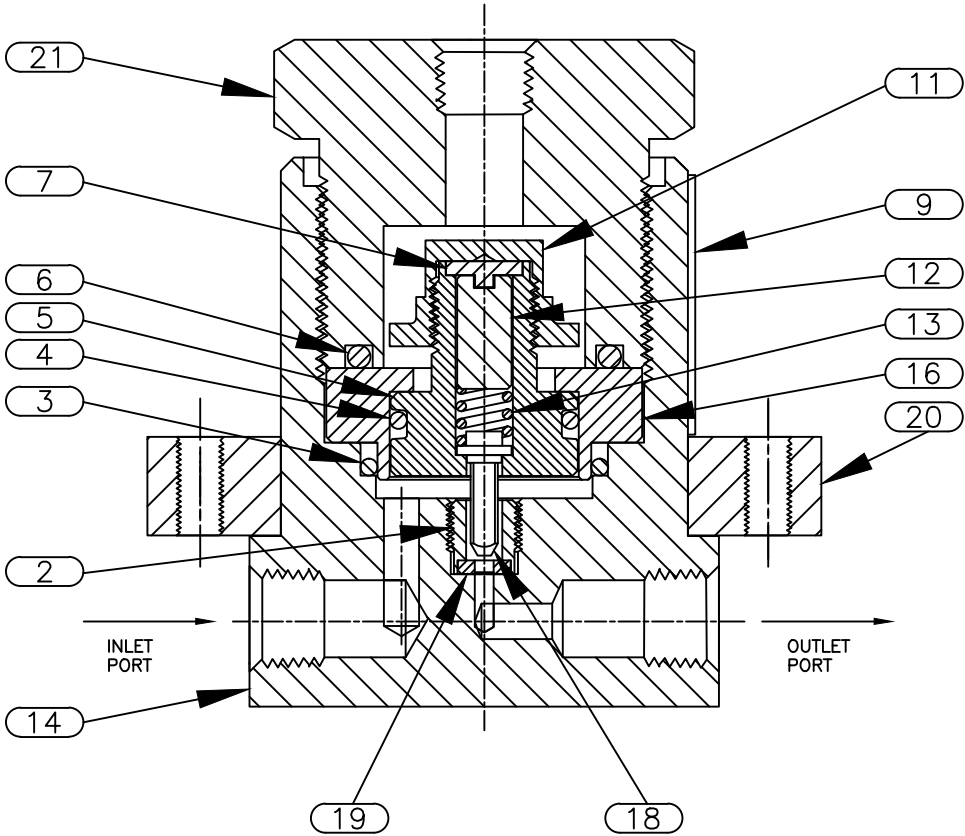
INLET & OUTLET PORT	"A"
1/4 NPT	Ø2.48
1/4 MS33649	2.30



## PANEL CUT-OUT

## NOTES:

1. PRESSURE AT WHICH REGULATOR IS USED MUST BE COMPATIBLE WITH THE PRESSURE RATING OF THE REGULATOR AND PORT SIZE/TYPE PROVIDED.
2. UNIT SHALL NOT BE SUBJECTED TO DIFFERENTIAL PRESSURE (DOME TO SUPPLY PRESSURE) OF MORE THAN 1000 PSI FOR A PERIOD NOT TO EXCEED 2 HRS.

- NOTES:
- 1. X-DESIGNATES INLET AND OUTLET PORT, BODY AND DOME MATERIAL (REF TO MODEL NO. DESIGNATION FOR APPROPRIATE NO.).
  - 2. APPLY SPARINGLY KRYTOX 240 AC LUBRICANT ON ALL O-RING SURFACES, THREADED PORTIONS OF ITEMS 2, 5, AND 21 BEFORE ASSEMBLY.
  - 3. REF. TO SPEC. 8067 FOR TEST INFORMATION.
  - 4. INK STAMP ASSEMBLY DATE ON REGULATOR BODY.
  - 5. INK STAMP CURE DATE FOR RUBBER PARTS.
  - 6. TORQUE VALUES: FIND NO. 11 -- 75-80 IN-LBS.  
FIND NO. 2 -- 35-40 IN-LBS.  
FIND NO. 21 -- 100 FT-LBS.

<b>TESCOM CORPORATION</b> INDUSTRIAL CONTROLS DIVISION ELK RIVER, MN USA				MATERIAL:  X	
INFORMATION CONTAINED ON THIS DOCUMENT IS THE PROPERTY OF TESCOM CORPORATION. NO RIGHTS ARE CONVEYED NOR IS PERMISSION TO DISCLOSE TO OTHERS GIVEN.				FINISH:  X	
UNLESS OTHERWISE SPECIFIED: .0 ± .020 .00 ± .010 .000 ± .005 SURFACE ROUGHNESS: 100/ CORNER & FILLET RADI: .005-.020 THREADS: CLASS 2 REMOVE ALL BURRS MFG. SPEC. 00301				DRAWN BY: RAG 4-24-01 CHECKED BY: KJW 4-27-01 APPROVED BY: KJW 4-27-01	
REV. DATE ECO NO. BY: APPR				NAME <b>ASSEMBLY, INFO.</b>	
DRAWING MADE IN THIRD ANGLE PROJECTION (DO NOT SCALE DRAWING)				SCALE: 2:1 SIZE: C NUMBER: 269-357-XXXX SHT. 2 OF 2	

PA	11-18-14	71089-14	IV	BR
P	11-20-02	1274-02	JOLS	MKS
N	3-11-02	748-02	RAG	DP
M	4-24-01	869-01	RAG	KJW
REV.	DATE	ECO NO.	BY:	APPR
REVISIONS				
REFERENCE DRAWING(S)				