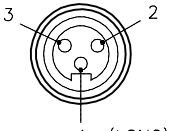

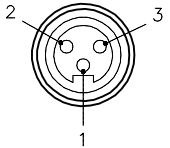

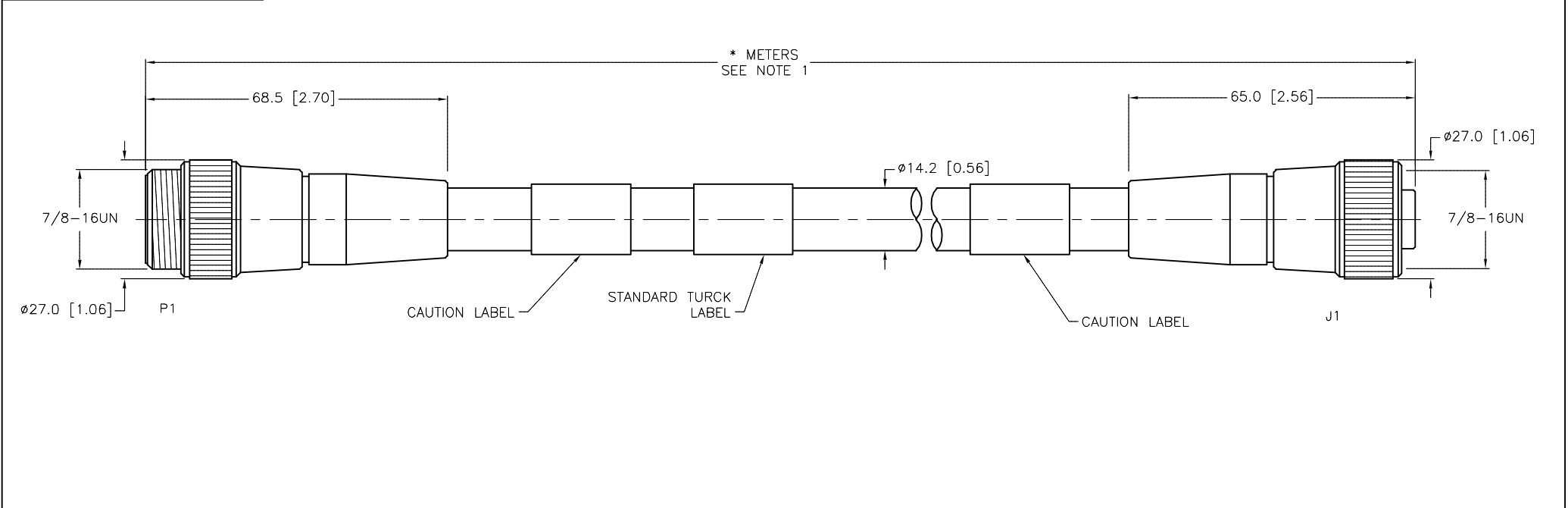


SPECIFICATIONS	
CONTACT CARRIER MATERIAL/COLOR	PVC
MOLDED HEAD MATERIAL/COLOR	PVC/BLACK
CONTACT MATERIAL/PLATING	BRASS/GOLD
COUPLING NUT MATERIAL/PLATING	BRASS/NICKEL
RATED CURRENT [A]	21.0 A
RATED VOLTAGE [V]	600 VAC
OUTER JACKET MATERIAL/COLOR	TPE/BLACK
NUMBER OF CONDUCTORS [AWG]	3x14 AWG
CONDUCTOR INSULATION MATERIAL	PVC
TEMPERATURE RATING	-40°C to +90°C (-40°F to +194°F)
PROTECTION CLASS	MEETS NEMA 1,3,4,6P AND IEC IP67
APPROVALS AND CERTIFICATIONS	UL 2237, CE

MALE END VIEW	FEMALE END VIEW
 <p>1 (LONG)</p> <p>1 = GREEN/YELLOW 2 = BLACK 3 = WHITE</p> 	 <p>1 = GREEN/YELLOW 2 = BLACK 3 = WHITE</p> 



CABLE LENGTH	TOLERANCE*
ALL LENGTHS	+ 4% (OR 50mm) OF LENGTH - 0% (OR 0mm) OF LENGTH WHICHEVER IS GREATER
STRIP LENGTH	TOLERANCE*
0-7mm	±0.5mm
8-29mm	±1.0mm
30-49mm	±2.0mm
50-69mm	±3.0mm
70-100mm	±4.0mm
OVER 100mm	±5.0mm
* UNLESS OTHERWISE SPECIFIED	

**CAUTION:**  
RISK OF ELECTRICAL SHOCK  
DO NOT DISCONNECT UNDER LOAD

SOURCE DRAWING - FOR REFERENCE ONLY

<div>8-29mm±1.0mm</div> <div>30-49mm±2.0mm</div> <div>50-69mm±3.0mm</div> <div>70-100mm±4.0mm</div> <div>OVER 100mm±5.0mm</div> <div>*UNLESS OTHERWISE SPECIFIED</div>					RELATED DOCUMENTS		3RD ANGLE PROJECTION		THIS DRAWING IS CONFIDENTIAL AND THE PROPERTY OF TURCK INC. USE OF THIS DOCUMENT WITHOUT WRITTEN PERMISSION IS PROHIBITED.		<div>3000 CAMPUS DRIVE</div> <div>MINNEAPOLIS, MN 55441</div> <div>1-800-544-7769</div> <div>(763) 553-7300</div> <div>(763) 553-0708 fax</div> <div>www.turck.us</div>			
NOTES:					1. "RJP" INDICATES CABLE LENGTH IN METERS. CONTACT TURCK TO ORDER SPECIFIC LENGTHS.		<div><div>1. RJP</div><div>2.</div><div>3.</div><div>4.</div></div> <div></div>		<div><b>TURCK</b></div>					
MATERIAL					SEE SPECIFICATIONS		DRFT		RDS	DATE	03/11/09	DESCRIPTION		
							APVD		SCALE		1 = 1.3		RSM RKM 34-*M	
FINISH					SEE SPECIFICATIONS		ALL DIMENSIONS DISPLAYED ON THIS DRAWING ARE FOR REFERENCE ONLY		CONTACT TURCK FOR MORE INFORMATION		UNIT OF MEASUREMENT		IDENTIFICATION NO.	REV
											MILLIMETER [ INCH ]			
							DO NOT SCALE THIS DRAWING				FILE: 777023402		SHEET 1 OF 1	
M	UPDATE APPROVALS AND CERTIFICATIONS				ER	10/08/19	75304							
REV	DESCRIPTION				BY	DATE	ECO NO.							